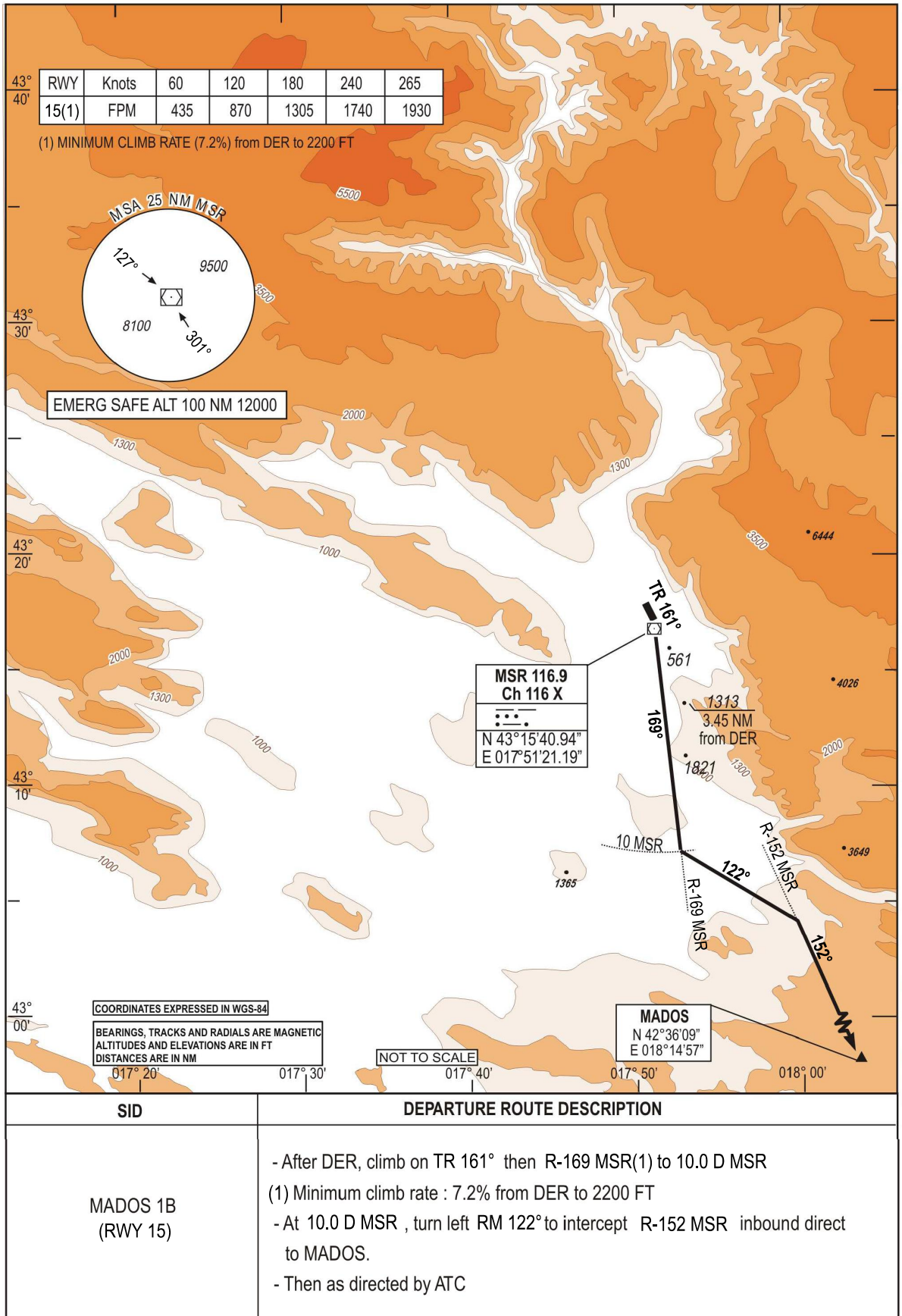


**STANDARD DEPARTURE CHART
INSTRUMENT (SID) - ICAO**

TRANSITION
ALTITUDE
10 000 FT
VAR 5°E (2020)

APP 120.225
129.875
TWR 125.550
ATIS 126.225

**MOSTAR (LQMO)
MADOS 1B RWY 15**



CHG: MAG VAR, EDITORIAL CHANGES;

THIS PAGE INTENTIONALLY LEFT BLANK